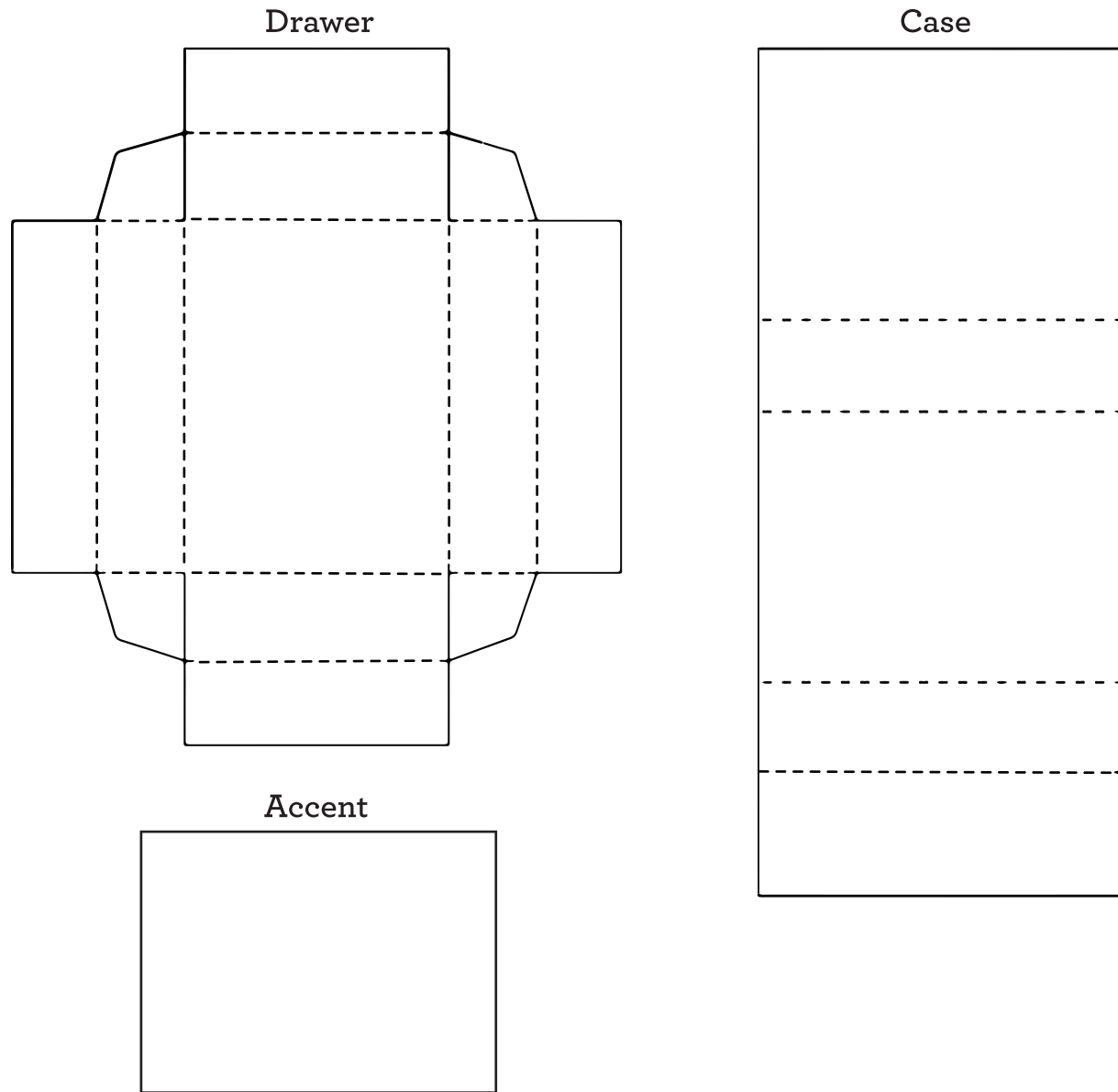


# Matchbox Template



## Instructions:

1. Print and hand trim template.
2. Trace template on cardstock and patterned paper.  
*Tip: Use cardstock for the drawer and patterned paper for the accent and outer case.*
3. Cut along solid lines; score and fold along dotted lines.  
*Tip: Create score lines with a straight edge and a bone folder.*
4. Fold the sides of the inside drawer in on themselves while tucking the tabs into the folds of the shorter sides.  
*Tip: Attach the sides with adhesive to keep them in place.*
5. Attach inside accent paper.
6. Fold case and attach where it overlaps.  
*Tip: Wrap it around the drawer before attaching to ensure a good fit.*
7. Embellish as desired.